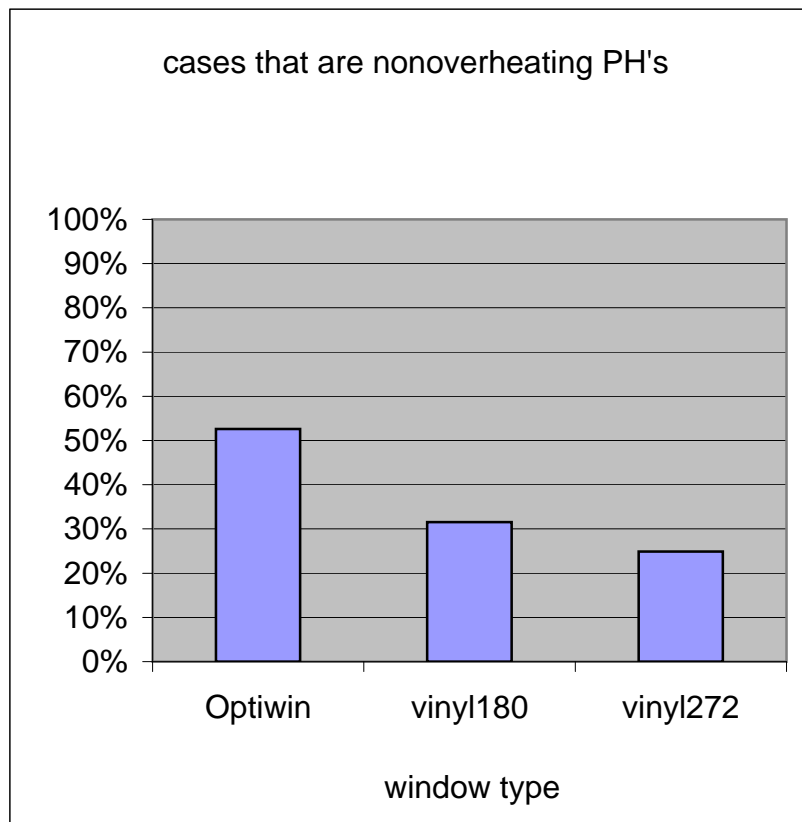
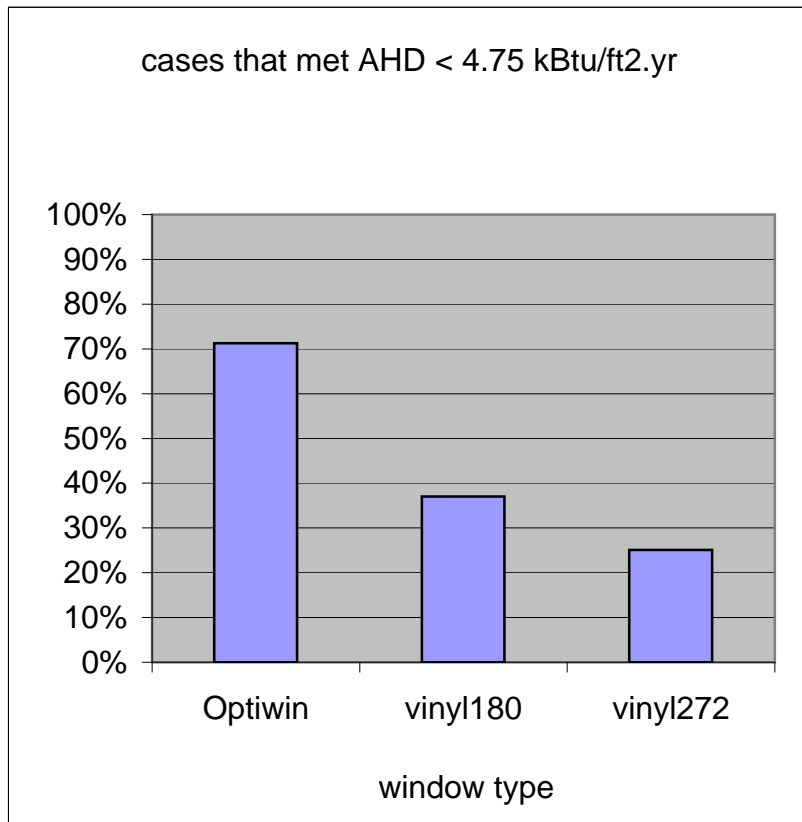


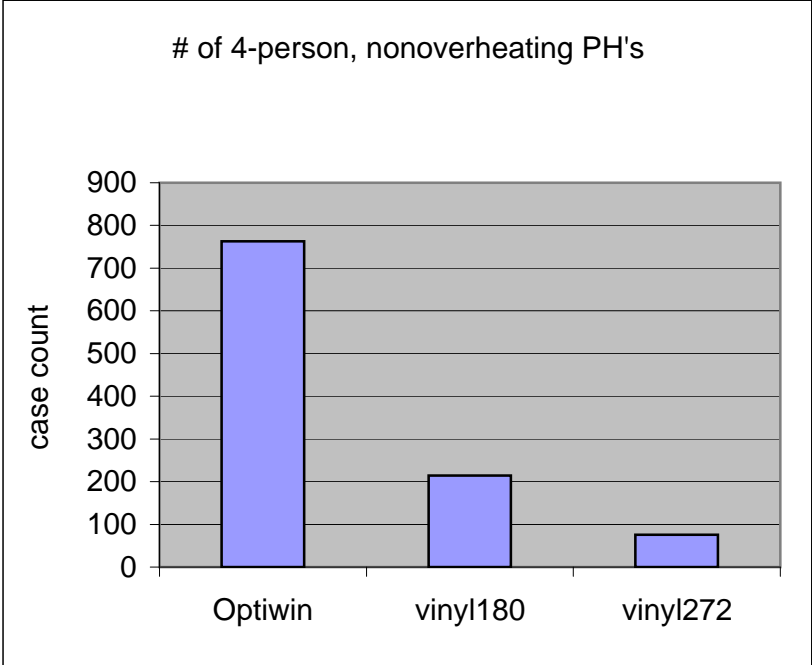
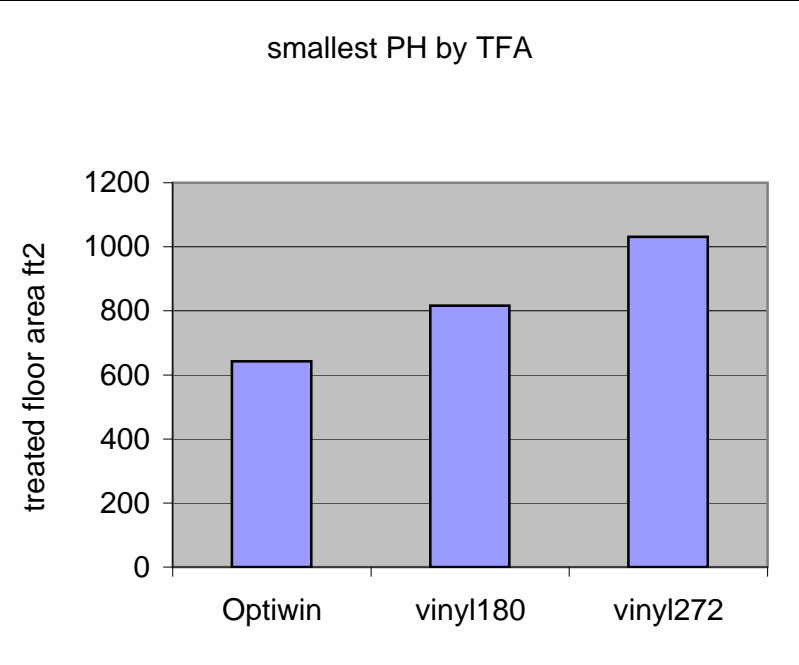
Light Construction Passive House buildings, Climate of Portland OR

# met AHD	Annual Heat Demand out of	met AHD	Primary Energy and PE < 38.1	Summer daily temp. swing and dT < 5.4F	nonoverheating PH's
13130	18432	Optiwin	12859	9699	53%
6819	18432	vinyl180	6814	5815	32%
4626	18432	vinyl272	4621	4588	25%



case#	smallest PH by TFA
413 Optiwin	642
661 vinyl180	816
562 vinyl272	1031

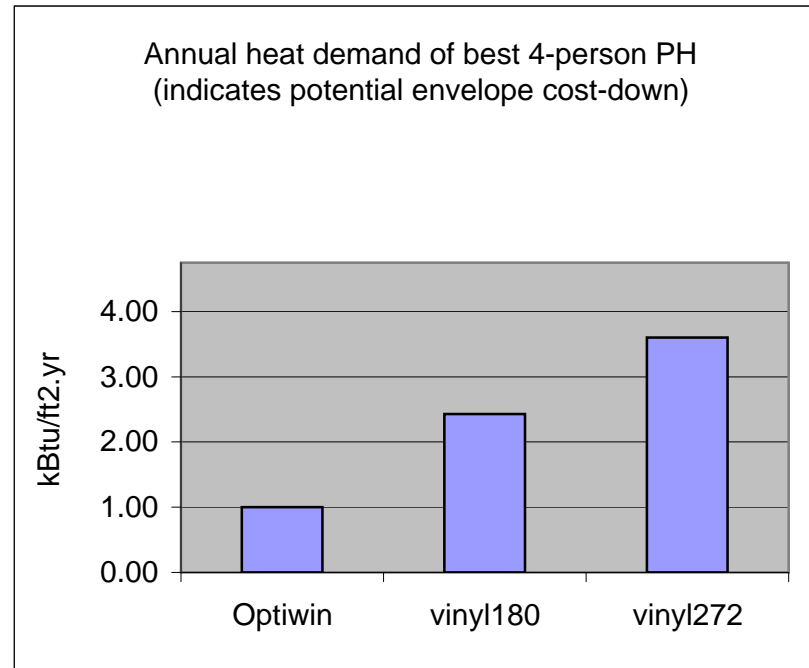
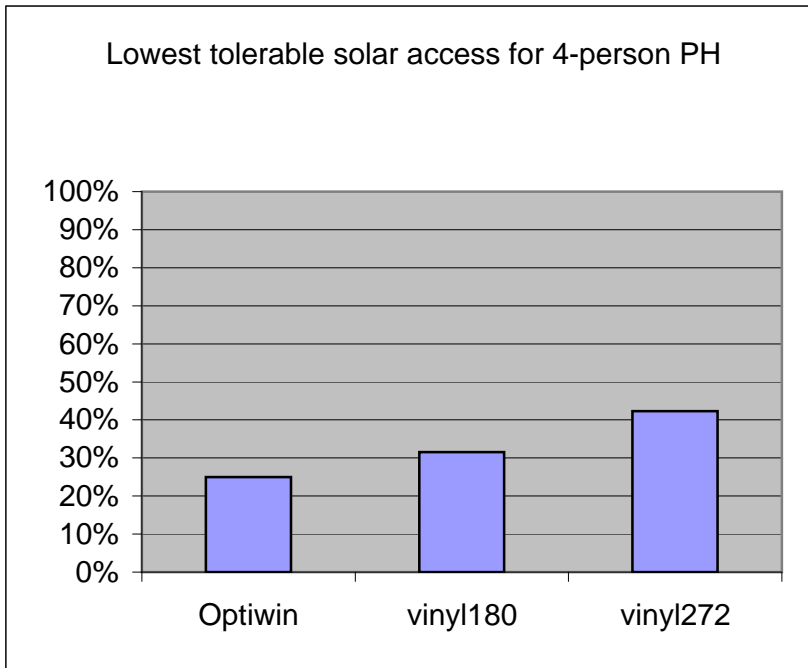
	# 4-person nonoverheating PH's
Optiwin	763
vinyl180	214
vinyl272	76



Window impact on PH design boundaries.xls

case#	Lowest tolerable solar access for 4-person PH	
1713	Optiwin	25%
17564	vinyl180	32%
1697	vinyl272	42%

case#	Annual heat demand of best 4-person PH	
366	Optiwin	1.00
5277	vinyl180	2.43
2738	vinyl272	3.60



4 person PH's

	NwinPct	EWwinPct	SwinPct	AddShadingPct
Optiwin	11.4%	15.1%	30.5%	62.2%
vinyl180	9.5%	8.5%	27.1%	78.8%
vinyl272	7.7%	5.3%	22.7%	80.0%

